


Date: 11 February 2025

Time: 14h00-15h30 SAST



Information session: Membership migration

**AFRICA
EVIDENCE
NETWORK**



Housekeeping

- We invite you to **participate** as much as possible!
- The session will be **recorded**.
- We have **cameras off** to save bandwidth for us to on slow connection.
- Keep your **mic off**, unless prompted to switch it on by the facilitator. This is to reduce background disruptive noise in the session.
- In case of technical problems, please write to **Charity Chisoro** in the chat box.
- Engage with us on the chat box during the session. **Charity Chisoro** will manage all your inputs and questions.



Agenda

Introduction: Siziwe

Why membership migration Matters: Siziwe

Live Demo: How to Update Your Details: Gloria

Q&A: All

Call to Action: Charity

Closure



Meet the AEN team



Siziwe Ngcwabe- Director & Co-Chair
- Africa Evidence Network



Charity Chisoro - Programme
Officer - Africa Evidence Network



Gloria Anderson- Programme
Officer - Africa Evidence
Network

About the AEN (Strategic goals)

- Foster connections and collaboration among those engaged in or supporting evidence-informed decision-making in Africa.
- Share capacities across the evidence-informed decision-making ecosystem in Africa.
- Increase knowledge and understanding of evidence-informed decision-making in Africa.
- Ensure the Network's own organisational excellence, as a sustainable evidence-informed member-driven organisation.



About the AEN

- To develop and support an efficient and effective evidence community in Africa.
- To increase the use of evidence in decision-making,
- To reduce poverty and inequality across the continent
- Ensure that the AEN is a strong, sustainable, well-governed network by continuing to reflect on and refine our structures and services.
- Establish the AEN as a member-driven network that serves the interests of the broad EIDM community in Africa.
- Foster a culture of experimentation and learning within the AEN.
- Bringing people together to build bridges between individuals and evidence communities across traditional boundaries.
- Increased Africa-Africa learning
- Improved access for those working in the African EIDM field to reliable, clear, and localized information about what EIDM is.
- Improved access to the best available evidence about how to increase the use of evidence in decision-making in Africa.
- Improved access to and use of EIDM capacity-development resources, including exploring frameworks and resources for professionalizing EIDM practitioners.



Why membership migration Matters

- AEN membership platform aims to improve member's experience.
- Each member will have their own profile
- To better serve you, we migrated to a new, more user-friendly membership portal and website! These platforms have been designed with simplicity, accessibility, and efficiency in mind, ensuring that all members can easily find the resources, tools, and updates they need.

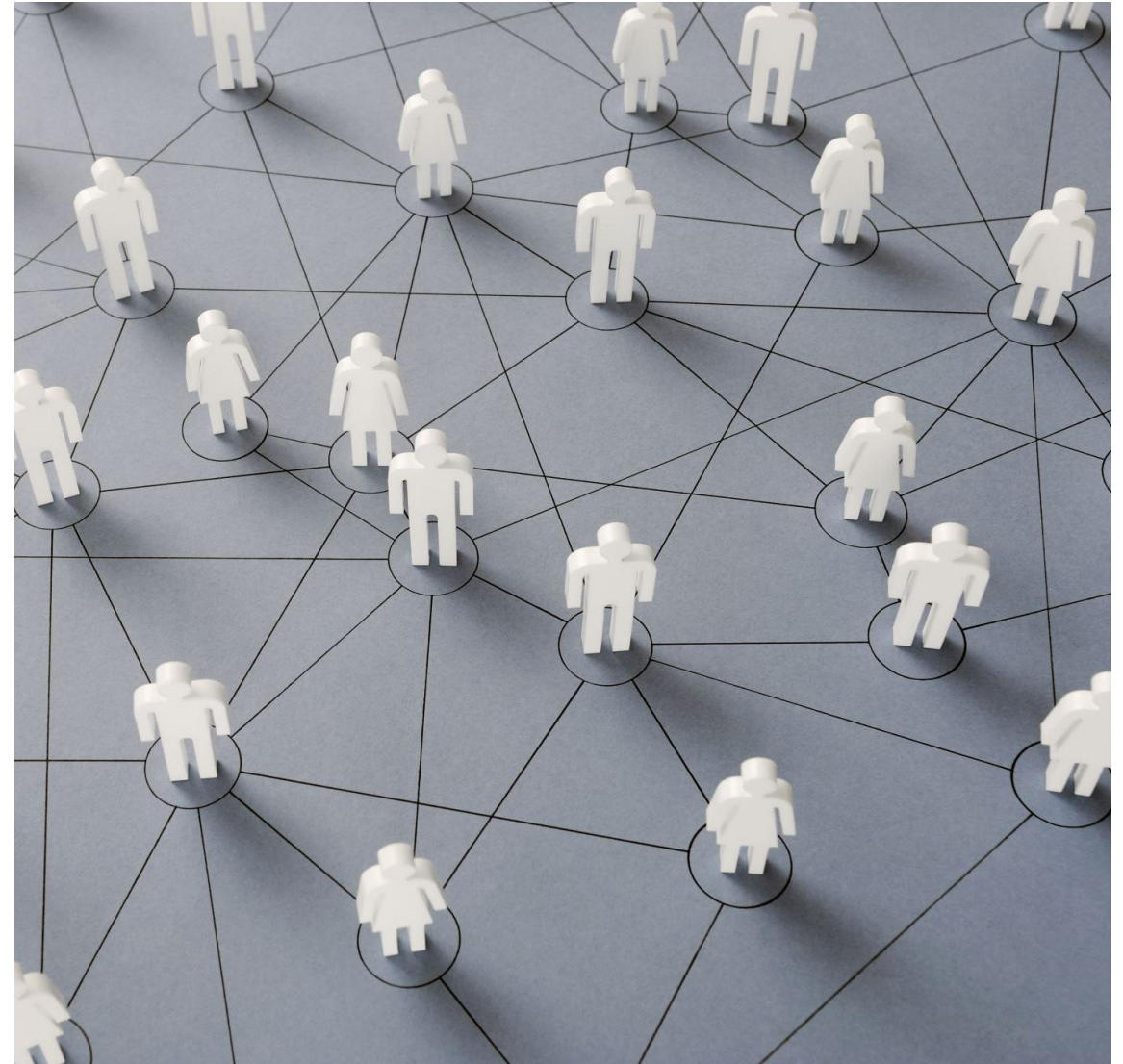
Here's why this change is so important:

- **Improved Navigation:** Quickly access the information and features you use most.
- **Enhanced User Experience:** Enjoy a clean and intuitive interface that works seamlessly across all devices.
- **Streamlined Updates:** Stay informed with the latest news, events, and resources without the hassle.
- **Better Accessibility:** A design that ensures everyone, regardless of technical ability, can easily engage with our content.
- We believe this upgrade will significantly enhance how you interact with AEN online, making it easier than ever to connect, collaborate, and stay informed.



Live Demo: How to Update Your Details

- Walk members through the update process **step-by-step**
- Emphasize **how quick and easy it is (5 minutes only!)**.
- **Update your details here:**
<https://app.joinit.com/o/africa-evidence-network/members-information/s6zmaKNnScynYvuzB>
- **New member join here:**
<https://app.joinit.com/o/africa-evidence-network/>



Q&A session

- This is an opportunity to answer questions and address concerns



Call to Action

- Give a **clear deadline**: “You have until 28 February 2025 to update—don’t miss out!”
- **Update your details here:**
<https://app.joinit.com/o/africa-evidence-network/members-information/s6zmaKNnScynYvuzB>
- **New member join here:**
<https://app.joinit.com/o/africa-evidence-network/>
- Please take **5 minutes NOW** to update while still in the session.



Closing the session

- The **recording** for the information session and a **blog** on this session will be published to ensure we continue engagements, answer questions and offer support asynchronous - via
- **LinkedIn. Follow the AEN on LinkedIn:** <https://www.linkedin.com/company/africa-evidence-network/>
- Email: Info@africaevidencenetwork.org
- Website: www.africaevidencenetwork.org
- X: @Africa_Evidence



Thank you

- **Email:** Info@africaevidencenetwork.org
- **Website:** www.africaevidencenetwork.org
- **LinkedIn:**
<https://www.linkedin.com/company/africa-evidence-network/>
- **X:** *@Africa_Evidence*

